

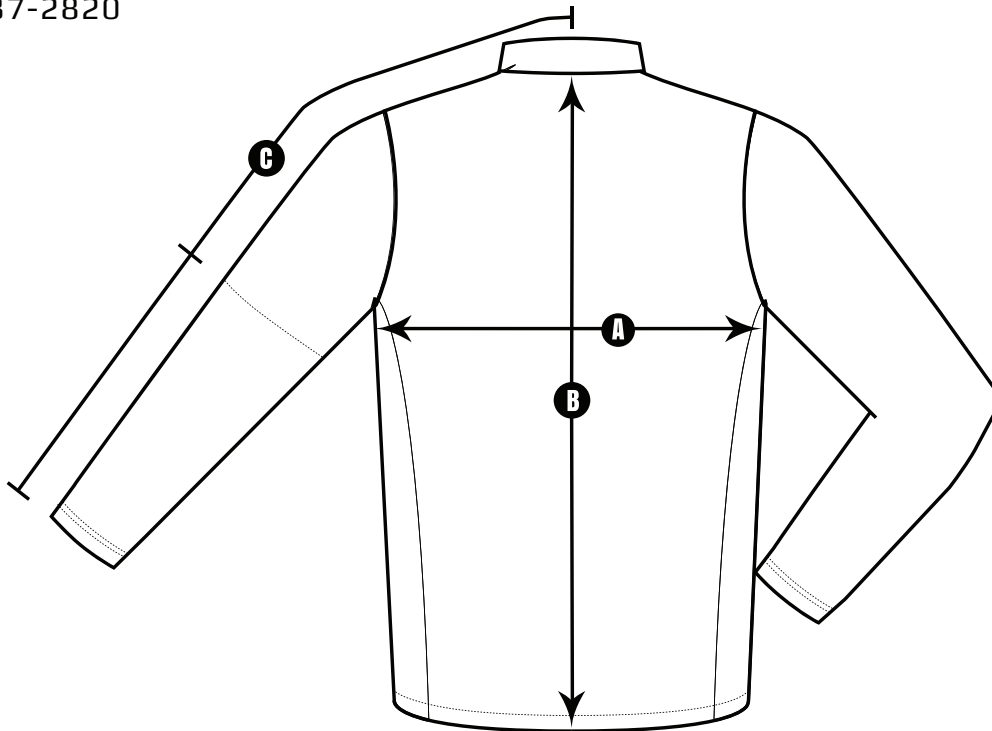


If you don't happen to find your size on Hot Shoppe's Sizing Chart, for a small added charge (\$45 approximately) we can make your shirt or jacket to your custom measurements. Here are the instructions to custom measure for your size.

1. First, take your best-fitting shirt, and lay the shirt face down, flat, on a smooth surface. Make sure there aren't any wrinkles.
2. Following our graphic below, using a tape measure, measure these three places on your shirt:

- A** Just below the armpits (Chest Measurement)
- B** From the seam just below the collar at the back to the bottom hem (Shirt Length)
- C** Measure from the same spot below the collar, all the way to the end of the sleeve, or the end of the cuff if the sleeves have cuffs (Sleeve Length)

3. Complete and email with these *\*exact\** measurements to [info@hotshoppedesigns.com](mailto:info@hotshoppedesigns.com) or fax to 949-487-2820



<b>A</b> CHEST LENGTH:	_____
<b>B</b> SHIRT LENGTH:	_____
<b>C</b> SLEEVE LENGTH:	_____