

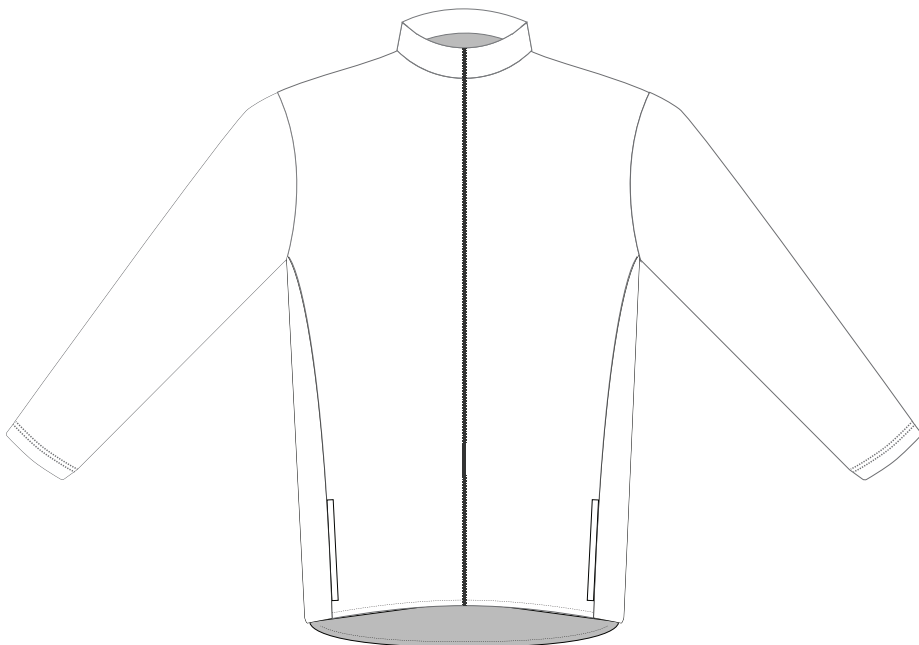


HOTSHOPPE
DESIGNS®

JOB NAME: ENTER HERE

DATE: XX/XX/20XX

STYLE: CROSSOVER



POLICIES & PROCEDURES

PRODUCTION STARTS ONLY AFTER DEPOSIT, SIZES AND ART IS APPROVED. ART PLACEMENT IS CONSIDERED TO BE APPROXIMATE IN POSITION AND SCALE. HOT SHOPPE DESIGNS MAKES EVERY ATTEMPT TO MATCH THE ART AS CLOSELY AS POSSIBLE TO THE FINISHED PRODUCT. DESIGN ELEMENTS THAT CROSS SEAM LINES CANNOT BE GUARANTEED TO LINE UP ON THE FINISHED PRODUCT. CUSTOMER AFFIRMS THEY HAVE PERMISSION TO USE ALL LOGOS CONTAINED IN THE PROVIDED ART FILES.

COLORS & DISCLAIMER

IF YOU HAVE A PANTONE COLOR BOOK PLEASE REFER TO THAT. IF NOT PLEASE CHECK OUR PANTONE COLOR CHART ON OUR WEBSITE UNDER ORDERING TO HELP YOU WITH COLOR SELECTIONS. WE GUARANTEE A COLOR MATCH WITHIN 10 %.

SPECIFIC ART DIRECTION

PLEASE FILL OUT THIS TEXT BOX WITH ANY SPECIFIC ART NOTES AND DIRECTION.

QUESTIONS? CONTACT US

P: 949. 487. 2828
E: ARTDEPT@HOTSHOPPEDESIGNS.COM

ART INSTRUCTIONS

EACH SECTION IS A CLIPPING MASK. USE THE SELECTION TOOL (V) TO DOUBLE CLICK INTO THE AREA YOU WANT TO ADD THE ART AND PASTE ACCORDINGLY. CONVERT ALL TEXT TO OUTLINES & SAVE AS .AI OR .PDF FILE. CHARGES MAY APPLY FOR SUBMITTING .JPG/.GIF/.PNG/.TIFF FILES.

PANTONE®
123

PANTONE®
123

PANTONE®
123

PANTONE®
123